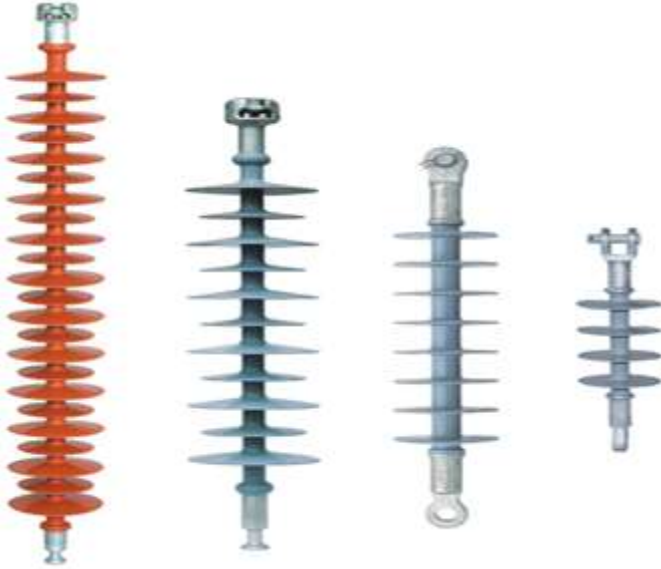


Composite suspension insulators

Composite suspension insulators also called long rod insulators including clevis & tongue type, ball & socket type and Y-clevis type. The composite insulators are for use on overhead lines for tension and suspension purposes.



Main parameters:

Voltage Range: 10kV~400kV

Mechanical bending load: 70kN, 120kN, 210kN and as per client's request

Colour: Red and grey

Composite suspension insulator complies with following standards:

- IEC60383
- IEC61109
- ANSI C29.11

Type	Rated Voltage(kV)	Mechanical Tensile Load (kN)	Ball And Socket Size	Section Length(mm)	Minimum Arcing distance(mm)	Minimum Creepage distance(mm)	Lightning Impulse Withstand Voltage(kV)
FXBW4-10/70	10	70	16	330	160	450	110
FXBW4-10/100	10	100	16	330	160	450	110
FXBW4-35/70	35	70	16	660	460	1200	230

FXBW4-35/100	35	100	16	700	460	1200	230
FXBW4-66/70	66	70	16	910	700	1900	410
FXBW4-66/100	66	100	16	940	720	1900	410
FXBW4-110/70	110	70	16	1200	1000	3150	550
FXBW4-110/100	110	100	16	1240	1000	3150	550
FXBW4-110/120	110	120	16	1450	1245	3650	550
FXBW4-220/110	220	100	16	2150	1900	6300	1000

For additional specifications please contact our customer service.